

novacolor™

I colori dell'Architettura

# Dune Opaco

MATT METALLIC EFFECT







DSO 18200



DSO 18204



DSO 18208



DSO 18201



DSO 18205



DSO 18209



DSO 18202



DSO 18206



DSO 18210



DSO 18203



DSO 18207



DSO 18211





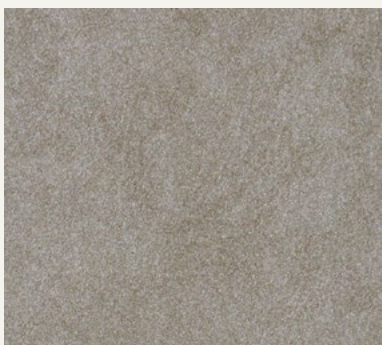
DSO 18212



DSO 18216



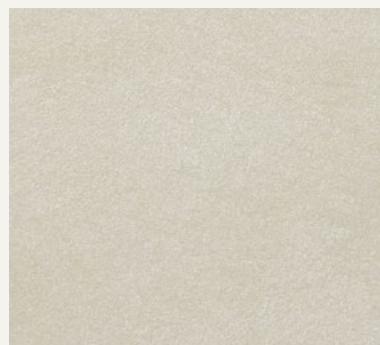
DSO 18220



DSO 18213



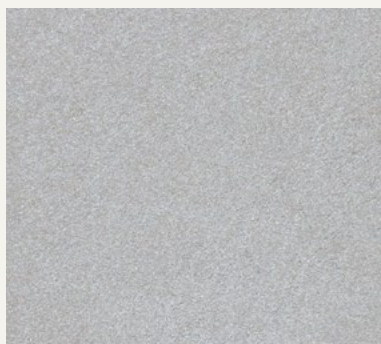
DSO 18217



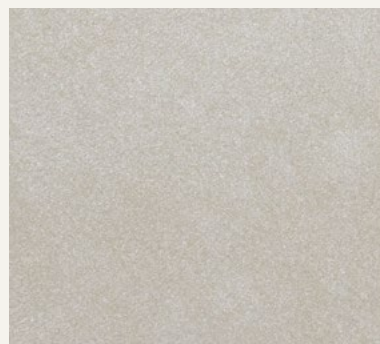
DSO 18221



DSO 18214



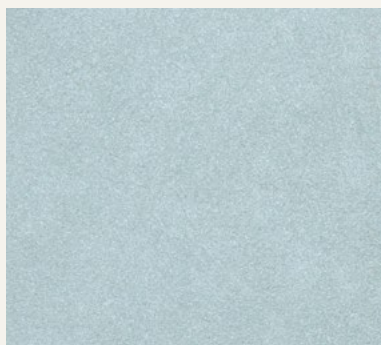
DSO 18218



DSO 18222



DSO 18215



DSO 18219



DSO 18223





DSO 18224



DSO 18228



DSO 18232



DSO 18225



DSO 18229



DUNE OPACO BASE SILVER



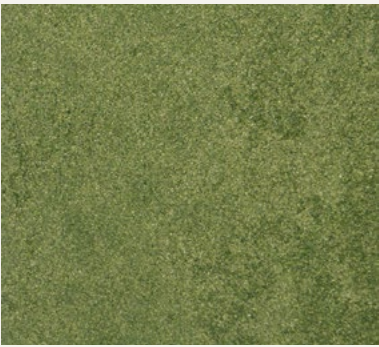
DSO 18226



DSO 18230



DSO 18233



DGO 18227



DGO 18231



DGO 18234



# Dune Opaco







DSO 18240



DSO 18239



DSO 18237



DGO 18236



# DUNE OPACO



DSO 18238

## IT Rivestimento decorativo per interni ad effetto metallizzato opaco

Applicare DUNE OPACO in due strati con rullo di pelo corto o spatola inox. Ripassare l'ultimo strato ancora umido con spatola inox o in plastica, per ottenere una soffice damascatura.  
Diluizione: 20% con acqua. Resa: 8-10 m<sup>2</sup>/l in due strati.  
Per maggiori informazioni consultare la scheda tecnica.



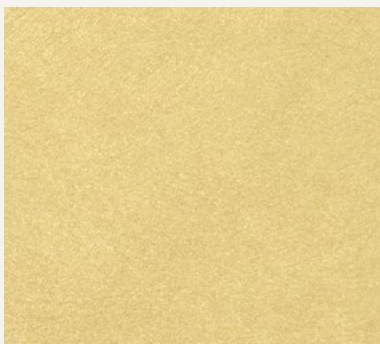
DGO 18235

## EN Decorative architectural trowel-on coating with matt metallic patterns

Apply DUNE OPACO in two layers with a short hair mohair roller or stainless steel trowel. Compress the second layer while wet with stainless steel or plastic trowel.  
Dilution: 20% with water. Yield: 8-10 m<sup>2</sup>/l in two layers.  
For more information please check the technical data sheet.

## FR Revêtement décoratif pour intérieurs à effet métallisé mat

Appliquer DUNE OPACO en deux couches avec rouleau de poil court ou truelle inox. Travailler la dernière couche encore humide avec truelle inox ou en plastique, pour obtenir un souple effet damasqué.  
Dilution: 20% avec eau. Rendement: 8-10 m<sup>2</sup>/l en deux couches.  
Pour plus d'informations contrôler la fiche technique.



DUNE OPACO BASE GOLD

## DE Dekorative Innenwandbeschichtung für eine matte Optik

Zwei Schichten DUNE OPACO mit einer Rolle oder einem Edelstahlspachtel auftragen. Die zweite Schicht mit Edelstahlspachtel über die noch feuchte Oberfläche streichen, und diese so bearbeiten, daß ein weicher Damask-Effekt erhalten wird.  
Verdünnung: 20% mit Wasser. Ergiebigkeit: 8-10 m<sup>2</sup>/l in zwei Schichten.  
Für weitere Info bitte siehe technisches Merkblatt.

## ES Revestimiento decorativo para interiores con efecto metalizado opaco

Aplicar DUNE OPACO en dos capas con rodillo de pelo corto o espátula inox. Repasar la última capa aún húmeda con una espátula inox o de plástico, para obtener un suave adamasado.  
Dilución: 20% con agua. Rendimiento: 8-10 m<sup>2</sup>/l en dos capas.  
Para mayor información consultar la ficha técnica.



**novacolor**<sup>TM</sup>  
I colori dell'Architettura

NOVACOLOR srl - 47122 Forlì - Italia  
Tel +39 0543 401840 - fax +39 0543 414585  
Via U. Aldrovandi, 10 - info@novacolor.it



NOVACOLOR is committed to reduce the environmental impact by producing friendly materials.

Made in Italy

**AZIENDA CON SISTEMA  
DI GESTIONE QUALITÀ  
CERTIFICATO DA DNV GL  
= ISO 9001 =**

**COMPANY WITH  
QUALITY SYSTEM  
CERTIFIED BY DNV GL  
= ISO 9001 =**