


novacolor™
I colori dell'Architettura

mineral finishes

Finiture a base di calce per interni ed esterni
Mineral finishes for interiors and exteriors





MARMUR FINE - PRIVATE HOUSE, FINLAND
Partner: Dekotote

FR. Finitions à base de chaux pour intérieurs et extérieurs

MINERAL FINISHES offre une gamme de finitions pour la décoration des surfaces intérieures et extérieures.

MARMUR FINE et MEDIO, enduit à la chaux à grain fin ou moyen, pour intérieurs et extérieurs.
ERA A PENNELLO, peinture à la chaux, pour intérieurs et extérieurs.

MARMUR FINE et MEDIO: Appliquer avec truelle inox en deux couches.
ERA A PENNELLO: Appliquer en deux couches avec pinceau ou spray.
Diluer la première couche avec 40-50% d'eau et la seconde couche avec 25-30% d'eau.

RENDEMENTS

MARMUR FINE: 1,5-2,5 Kg/m² en deux couches
MARMUR MEDIO: 2-2,5 Kg/m² en deux couches
ERA A PENNELLO: 2-4 m²/Kg en deux couches

Les applications du nuancier, ont été réalisées avec Era a Pennello.
Les teintes présentées sont aussi réalisables avec Marmor Fine et Marmor Medio.

Pour plus d'informations consulter les fiches techniques des produits.

DE. Kalkspachtelmassen und Farben für den Innen- und Außenbereich

MINERAL FINISHES bietet eine reiche Palette von Kalkspachtelmassen und eine Kalkfarbe für den Innen und Außenbereich.

MARMUR FINE und MEDIO, Kalkputze, innen und außen.
ERA A PENNELLO, Kalkfarbe, innen und außen.

MARMUR FINE und MEDIO: Das Produkt in zwei Schichten mit Stahlspachtel auftragen.
ERA A PENNELLO: Mit Spritzpistole, Pinsel oder Roller in zwei Schichten auftragen. Die erste Schicht mit 40-50% Wasser verdünnen, die zweite mit 25-30%.

VERBRAUCH

MARMUR FINE: 1,5-2,5 Kg/m² in den zwei Schichten
MARMUR MEDIO: 2-2,5 Kg/m² in den zwei Schichten
ERA A PENNELLO: 2-4 m²/Kg in den zwei Schichten

Alle Farben sind mit Era a Pennello, Kalkfarbe für innen und außen, aufgetragen worden. Dieselben Farben sind auch mit Marmor Fine und Marmor Medio verfügbar.

Für weitere Info bitte siehe technisches Merkblatt.



mineral finishes

IT. Finiture a base di calce per interni ed esterni

MINERAL FINISHES offre una gamma di finiture minerali per la decorazione di superfici interne ed esterne.

MARMUR FINE e MEDIO, intonachino a base calce, a grana fine o media, per interni ed esterni.
ERA A PENNELLO, pittura a calce, per interni ed esterni.

MARMUR FINE e MEDIO: Applicare in due strati con spatola inox.
ERA A PENNELLO: Applicare in due strati con rullo, pennello o airless.
Diluire il primo strato con 40-50% di acqua ed il secondo strato con 25-30% di acqua.

Rese

MARMUR FINE: 1,5-2,5 Kg/m² nei due strati
MARMUR MEDIO: 2-2,5 Kg/m² nei due strati
ERA A PENNELLO: 2-4 m²/Kg nei due strati

Le applicazioni all'interno del catalogo sono realizzate con Era a Pennello. I colori presentati sono realizzabili anche con Marmur Fine e Marmur Medio.

Per maggiori informazioni consultare le rispettive schede tecniche.

EN. Mineral finishes for interiors and exteriors

MINERAL FINISHES offers a selection of lime-based finishes for the decoration of interior and exterior facades.

MARMUR FINE and MEDIO, lime-based plasters, with fine or medium grain, for interiors and exteriors.
ERA A PENNELLO, lime paint, for interiors and exteriors.

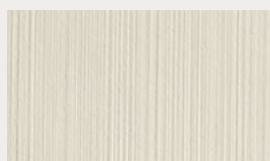
MARMUR FINE and MEDIO: Apply the products in two layers with a stainless steel trowel.
ERA A PENNELLO: Apply it in two layers with roller, brush or airless. Dilute the first layer with 40-50% of water and the second layer with 25-30% of water.

Yield

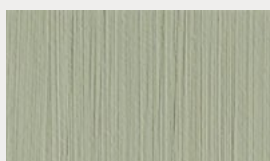
MARMUR FINE: 1,5-2,5 Kg/m² in two layers
MARMUR MEDIO: 2-2,5 Kg/m² in two layers
ERA A PENNELLO: 2-4 m²/Kg in two layers

The color chart is realized with Era a Pennello. All the colors displayed are available also for Marmur Fine and Marmur Medio.

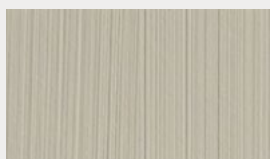
For more information please check the technical data sheets.



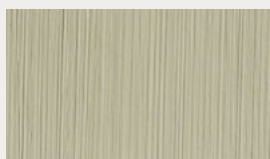
EP 20300



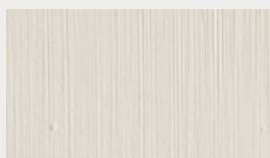
EP 20306



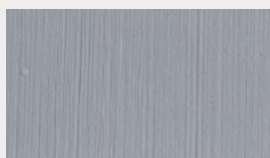
EP 20301



EP 20307



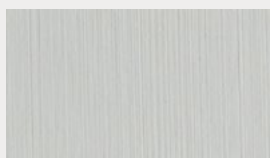
EP 20302



EP 20308



EP 20303



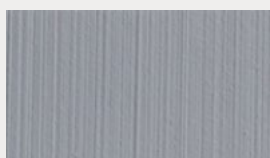
EP 20309



EP 20304



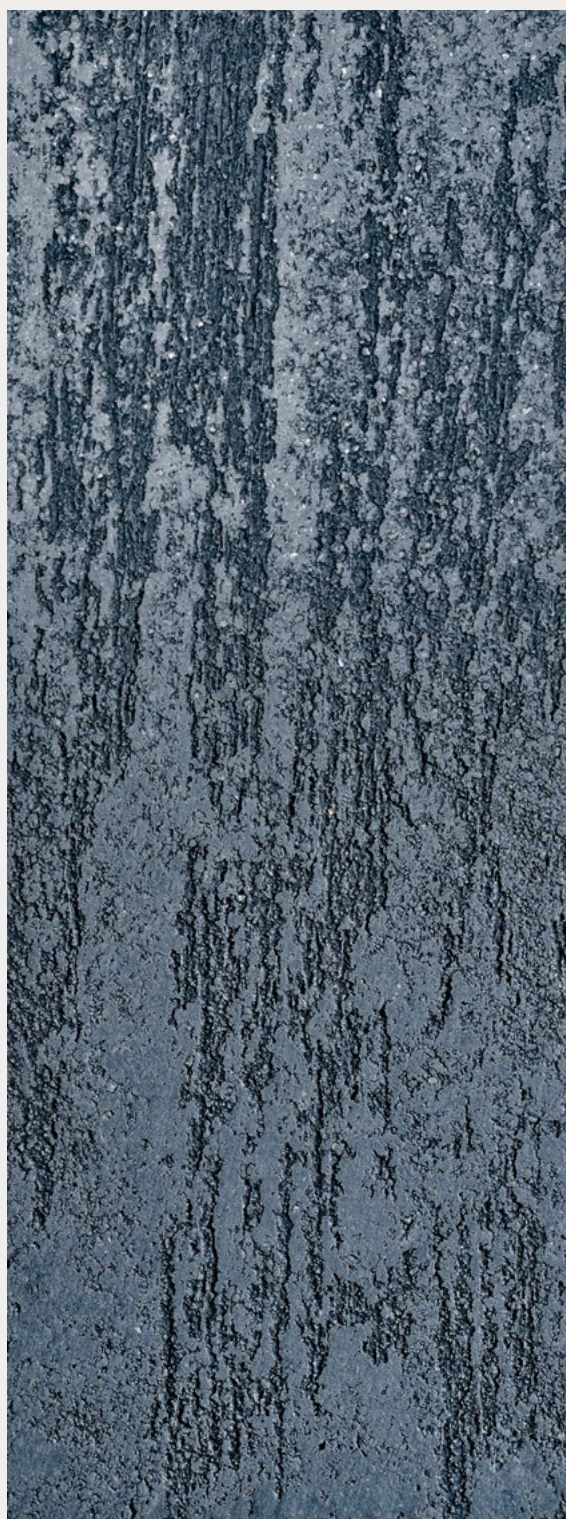
EP 20310



EP 20305



EP 20311



MARMUR MEDIO 20308 & FASE SILOSSANICA INCOLORE
& FS 6240 (DILUTION 1:1)



mineral finishes



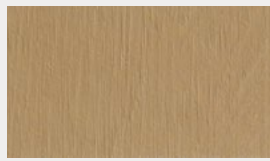
EP 20312



EP 20318



EP 20313



EP 20319



EP 20314



EP 20320



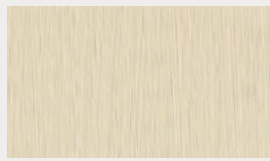
EP 20315



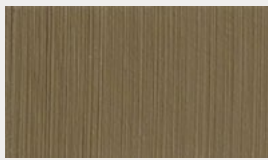
EP 20321



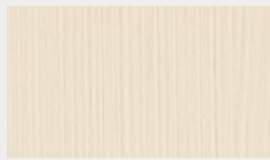
EP 20316



EP 20322



EP 20317



EP 20323



MARMUR FINE 20324 & FASE SILOSSANICA INCOLORE
& FS 6110 (DILUTION 1:1)



EP 20325



EP 20331



EP 20326



EP 20332



EP 20327



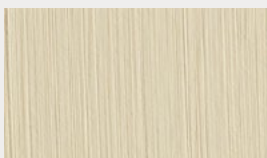
EP 20333



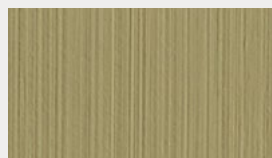
EP 20328



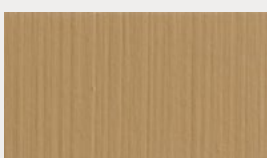
EP 20334



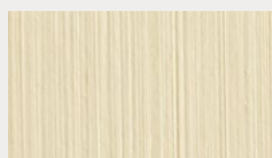
EP 20329



EP 20335



EP 20330



EP 20336



MARMUR FINE 20337 & FASE SILOSSANICA INCOLORE



MINERAL FINISHES



Certificato A+ per le basse emissioni di sostanze volatili nell'aria.
A+ Certified for the low emissions of volatile substances in the air.

Le tonalità di questa cartella hanno valore puramente indicativo. The color samples in this color chart should be considered purely indicative.

Photo cover Eolo Radoni

novacolorTM
I colori dell'Architettura

NOVACOLOR Srl
Via Ulisse Aldrovandi 10 - 47122 Forlì (FC) Italy
Tel +39 0543 401840 - Fax +39 0543 414585
info@novacolor.it



Novacolor is committed to reduce the environmental impact by producing friendly materials.



AZIENDA CON
SISTEMA DI GESTIONE
CERTIFICATO DA DNV GL
= ISO 9001 =
= ISO 14001 =

COMPANY WITH
MANAGEMENT SYSTEM
CERTIFIED BY DNV GL
= ISO 9001 =
= ISO 14001 =

Made in Italy